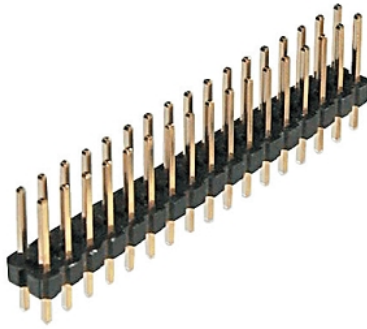


MPSI CONNEX 100-0001-XX Series 2.54mm (0.100") Pitch 2-Row Vertical, TH, PCB Header: 3A, PBT UL94V-0, 2 to 40 Positions. Order Code 100-0001-XX (See > Options)

| T +44 (0) 1256 817933 | F +44 (0) 8707 625402 | www.mpsiconnex.com | sales@mpsiconnex.com |



Images are for Illustrative Purposes Only

100-0001 Series Dual-Row 2.54mm Pitch Pin Headers.

Vertical PCB Mounting and Through-Hole Technology.

Rated at 3A, with Standard UL94V-0 (PBT) Insulator

Available Options (See > Options):

Number of Ways: 2 to 40

Contact Plating

Insulator Materials (Including Hi-Temp Insulator PA66)

Insulator Height

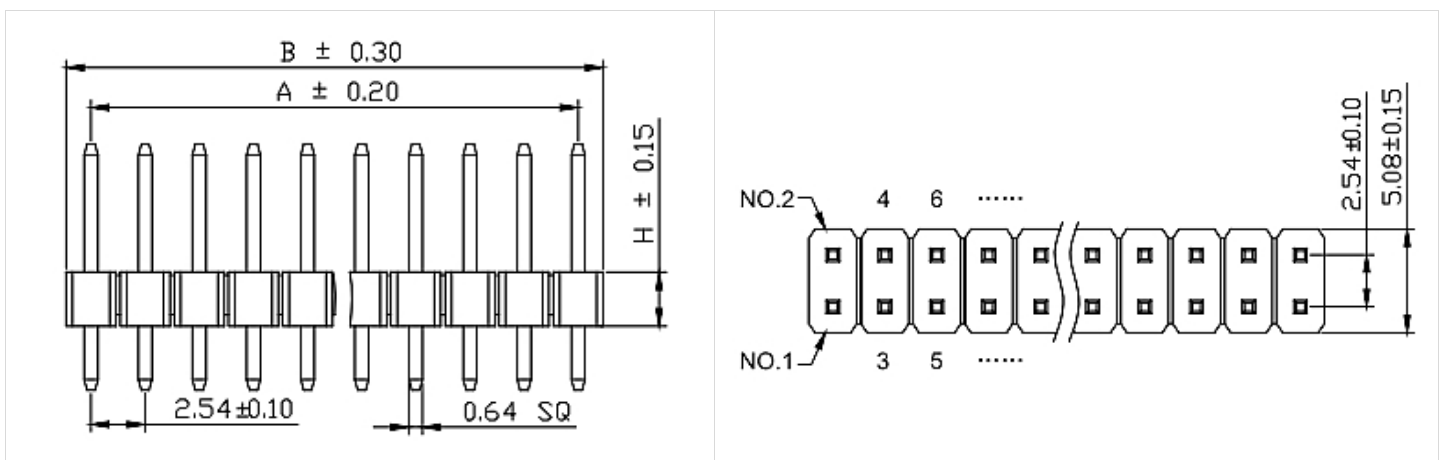
> TECHNICAL SPECIFICATION

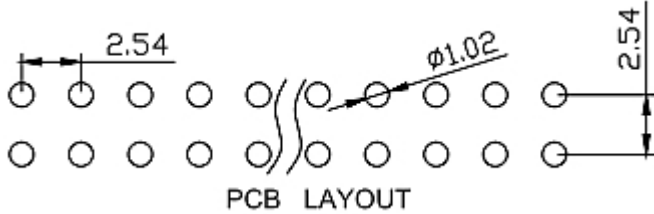
PITCH:	2.54MM	
NUMBER OF ROWS:	2	
NUMBER OF WAYS:	2 to 40	(SEE > OPTIONS)
MOUNTING TYPE:	PCB THROUGH-HOLE	
ORIENTATION:	VERTICAL	
INSULATOR COLOUR:	BLACK	
INSULATION (PLASTICS):	PBT UL94V-0 STANDARD	(SEE > OPTIONS)
CONTACT MATERIAL:	BRASS/COPPER ALLOY	
CONTACT PLATING:	GOLD FLASH STANDARD	(SEE > OPTIONS)
RoHS COMPLIANT:	YES	
CURRENT RATING:	3A	
CONTACT RESISTANCE:	20 mΩ MAX	
DIELECTRIC WITHSTANDING VOLTAGE:	600V AC	
INSULATION RESISTANCE:	100MΩ	
OPERATING TEMPERATURE:	-40°C to +105°C	

> OPTIONS

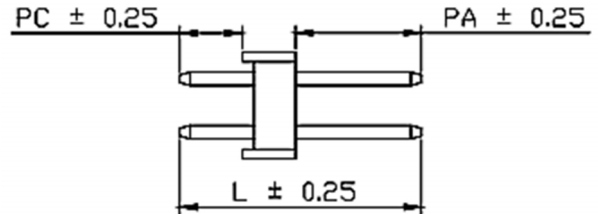
NUMBER OF WAYS:	-XX SUFFIX DESIGNATES NUMBER OF WAYS
INSULATOR MATLS, INCL HI-TEMP INSULATOR: (PBT AS STANDARD NO SUFFIX)	-HT PA6T BLACK (UL94V-0) POLYAMIDE NYLON HI-TEMP INSULATOR SUITABLE FOR MAX 250°C SOLDERING TEMPERATURE FOR 60 SECONDS. -A PA66 BLACK POLYAMIDE NYLON (UL94V-0) -B PA46 BLACK POLYAMIDE NYLON (UL94V-0) -C LCP BLACK (UL94V-0)
CONTACT PLATING: (GOLD FLASH AS STANDARD NO SUFFIX)	-G2 5U" GOLD -G3 10U" GOLD -G4 15U" GOLD -G5 30U" GOLD -S0 GOLD FLASH/TIN -SN TIN
INSULATOR HEIGHT: (2.5MM AS STANDARD NO SUFFIX)	-H1 1MM -H15 1.5MM -H2 2MM
PART NUMBER EXAMPLE: 100-0001-25-HT-G2 = 25 WAY, HI-TEMP INSULATOR, 5U" PLATING PLEASE VERIFY AVAILABILITY ON OPTIONS PRIOR TO SELECTION / ORDERING	

> PHYSICAL





Dimension list						
Item	A	B	L	PA	PC	H
Standard			11.50	6.00	3.00	2.50



No. of Contacts	DIM A	DIM B
2	----	2.54
4	2.54	5.08
6	5.08	7.62
8	7.62	10.16
10	10.16	12.70
12	12.70	15.24
14	15.24	17.78
16	17.78	20.32
18	20.32	22.86
20	22.86	25.40
22	25.40	27.94
24	27.94	30.48
26	30.48	33.02
28	33.02	35.56
30	35.56	38.10
32	38.10	40.64
34	40.64	43.18
36	43.18	45.72
38	45.72	48.26
40	48.26	50.80
42	50.80	53.34
44	53.34	55.88
46	55.88	58.42
48	58.42	60.96
50	60.96	63.50
52	63.50	66.04
54	66.04	68.58
56	68.58	71.12
58	71.12	73.66
60	73.66	76.20
62	76.20	78.74
64	78.74	81.28
66	81.28	83.82
68	83.82	86.36
70	86.36	88.90
72	88.90	91.44
74	91.44	93.98
76	93.98	96.52
78	96.52	99.06
80	99.06	101.6