

## MPSI CONNEX FILTERED POWER ENTRY MODULE, 704 Series:

Order Code 704-0001 (See > Options) – 1A-10A, Fused, Panel Mount, Faston Terms

| T +44 (0) 1256 817933 | www.mpsiconnex.com | sales@mpsiconnex.com |



Filtered Mains Power Entry Module, IEC Connector, Fuseholder (Fuses Ø 5 x 20mm) and 6.3mm(0.8T) Faston Terminals as standard.

Provides effective EMI suppression of both line to line and line to ground noise.

Options include 1A, 3A, 6A and 10A current rating, double fused (DF suffix), optional resistor (R suffix) and Lead-wires (LW suffix). (See Options)

Panel Mount Mechanical Assembly.

Typical Applications: Electronic Products, Test and Measurement Equipment, Medical Equipment etc.

### > TECHNICAL SPECIFICATION

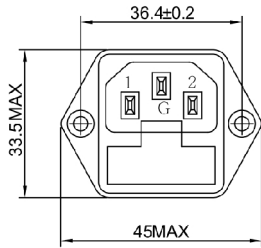
VOLTAGE RATING:	125/250 VAC
CURRENT RATING:	1A, 3A, 6A, 10A (See Options)
OPERATING FREQUENCY:	50/60 Hz
HIPOT RATING (LINE TO LINE):	1450 VDC
HIPOT RATING (LINE TO GROUND):	2250 VDC
OPERATING TEMPERATURE:	-25°C to +85°C
SAFETY COMPLIANCE:	UL, CSA, CQC, CE, VDE (Excl Double Fuse Vers)
RoHS COMPLIANT:	YES

### > OPTIONS

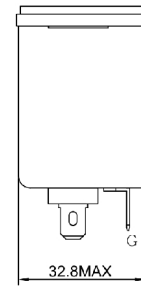
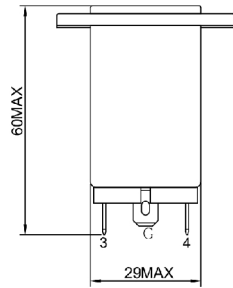
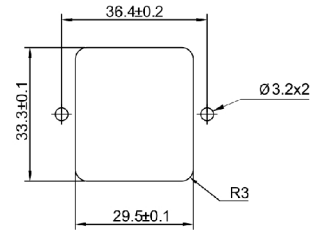
Part No.	Rated Current (A)	Inductance L(mH)	Capacitance CX(µF)	Capacitance CY(pF)	Output Conn
704-0001-1	1	3.7	0.1	3300	6.3mm(0.8T) faston terminal (optional lead-wire)
704-0001-3	3	1.8	0.1	3300	
704-0001-6	6	0.7	0.1	3300	
704-0001-10	10	0.3	0.1	3300	
704-0001-1R	1	3.7	0.1	3300	
704-0001-3R	3	1.8	0.1	3300	
704-0001-6R	6	0.7	0.1	3300	
704-0001-10R	10	0.3	0.1	3300	

Special Option Suffixes: Double Fused DF, Optional Resistor R, Lead-Wires LW.

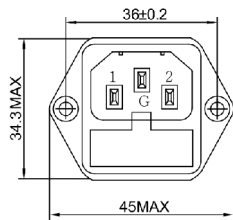
## > PHYSICAL (STANDARD TYPE)



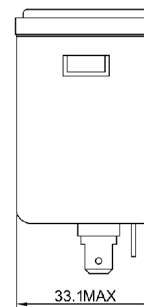
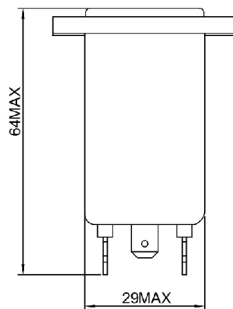
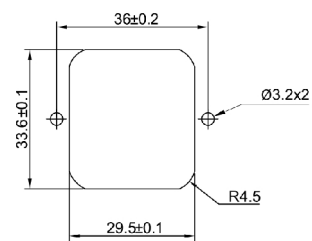
SUGGESTED CUTOUT  
MOUNTING DIMENSIONS  
OF SOCKET



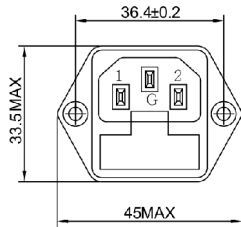
## > PHYSICAL (OPTIONAL RESISTOR TYPE)



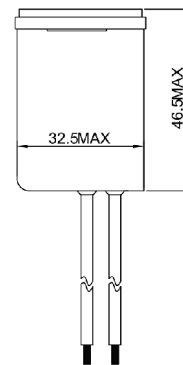
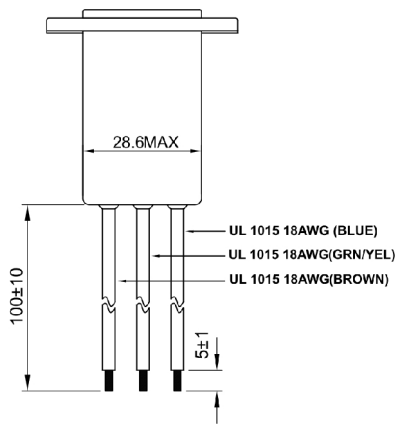
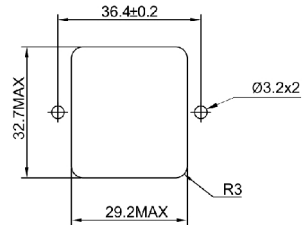
SUGGESTED CUTOUT  
MOUNTING DIMENSIONS  
OF SOCKET



## > PHYSICAL (OPTIONAL LEAD WIRE TYPE)

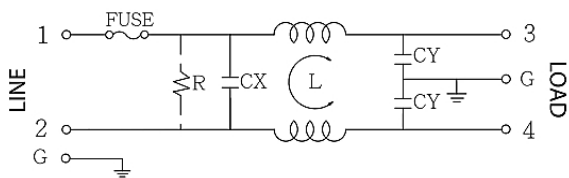


SUGGESTED CUTOUT MOUNTING DIMENSIONS OF SOCKET

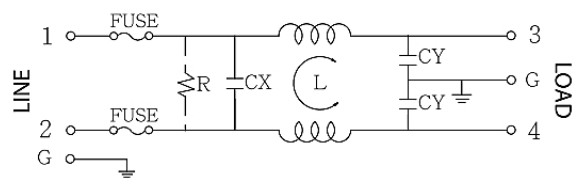


## > SCHEMATIC

Standard Type



Optional Resistor Type



\*With optional resistor.  
R: 1M ohm, 1/4W min.

## > FILTER ATTENUATION

