

MPSI CONNEX FILTERED POWER ENTRY MODULE, 704 Series:

Order Code 704-0009 (See > Options) – 1A-10A, Fused, Push-Fit, Faston Terms

| T +44 (0) 1256 817933 | www.mpsiconnex.com | sales@mpsiconnex.com |



Compact Filtered Mains Power Entry Module, IEC320 Connector, Fuseholder with Single/Double Fuse Options & 6.3mm(0.8T) Faston Terminals as standard.

Push-Fit Mount Mechanical Assembly. Left & Right Springs.

Provides effective EMI suppression of both line to line and line to ground noise.

Options include 1A, 3A, 6A & 10A Current Rating, Single or Double Fused (-DF), Optional Choke (-C), Resistor (-R) & Lead-Wires (-LW). See Options.

Typical Applications: Portable Electrical and Electronic Equipment, Single Phase & Switch-Mode Power Supplies, Test and Measurement Equipment etc.

> TECHNICAL SPECIFICATION

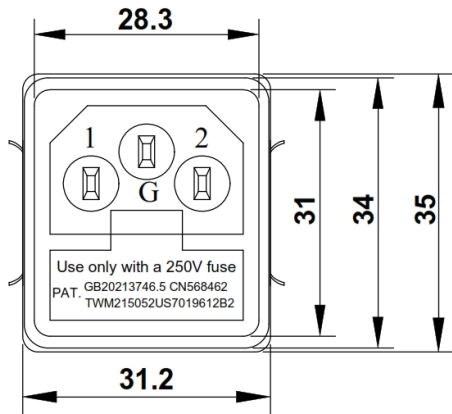
VOLTAGE RATING:	115/250 VAC
CURRENT RATING @ 50°C:	1A, 3A, 6A, 10A (See Options)
OPERATING FREQUENCY:	50/60 Hz
HIPOT RATING (LINE TO LINE):	1450 VDC
HIPOT RATING (LINE TO GROUND):	2250 VDC
OPERATING TEMPERATURE:	-25°C to +85°C
SAFETY COMPLIANCE:	UL, VDE, CQC, CE
RoHS COMPLIANT:	YES

> OPTIONS

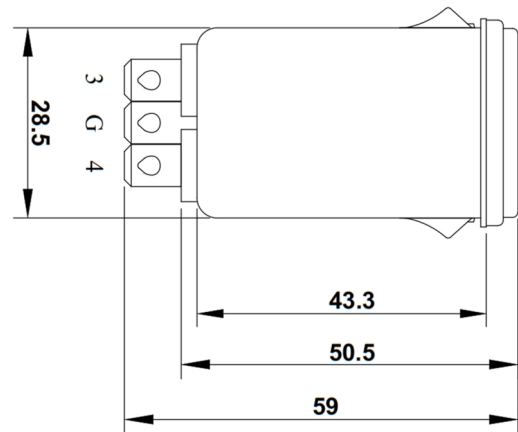
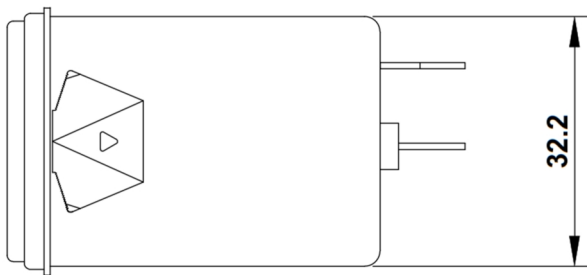
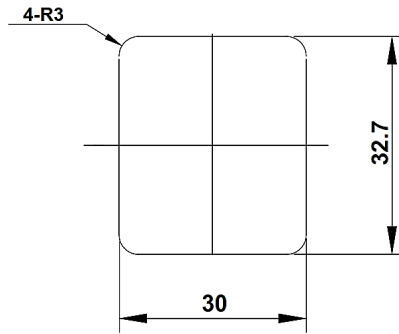
Part No.	Rated Current (A)	Inductance L(mH)	Capacitance CX(μF)	Capacitance CY(nF)	Output Conn
704-0009-1	1	6.5	0.1	2.2	6.3mm(0.8T) faston terminal
704-0009-3	3	2.5	0.1	2.2	
704-0009-6	6	0.8	0.1	2.2	
704-0009-10	10	0.2	0.1	2.2	

Special Option Suffixes: Double Fused DF, Optional Choke C, Optional Resistor R, Lead-Wires LW.

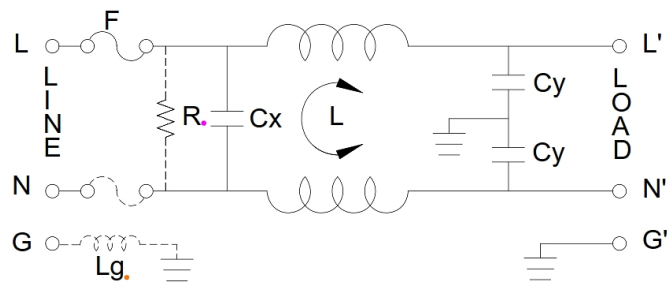
> PHYSICAL



SUGGESTED PANEL CUTOUT
(MOUNTING FROM FRONT)



> SCHEMATIC



- Earth line choke= 100uH / 120uH / 400uH (optional)
- Bleeder resistor= 1M ohm (optional)