

MPSI CONNEX USB 3.0 Superspeed Connectors, 605 Series:

Order Code 605-0008 – Type A Recept, Horiz 90° Reverse Mid-Mount, TH, 1.8A, UL94V-0 Blue LCP

| www.mpsiconnex.com | sales@mpsiconnex.com |



Images are for Illustrative Purposes Only

USB 3.0 Type A, Horizontal 90° Through-Hole **Reverse** Mid-Mount PCB Connector, Straight Hold Downs. Current Rating 1.8A.

Blue UL94V-0 LCP Hi-Temp Insulator as Standard.

Steel Shell and Gold Flash Plated Contacts as Standard.

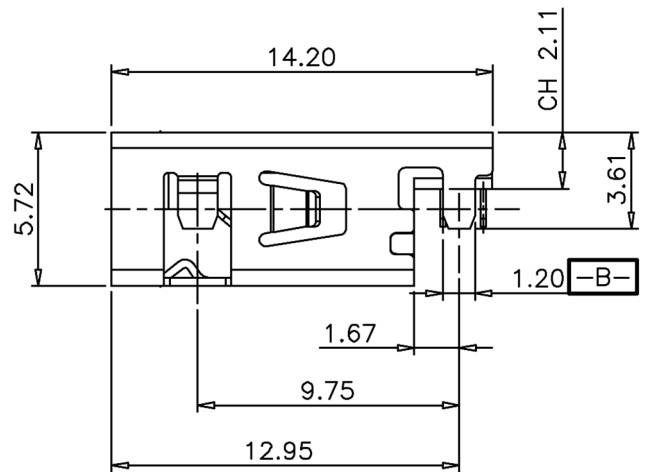
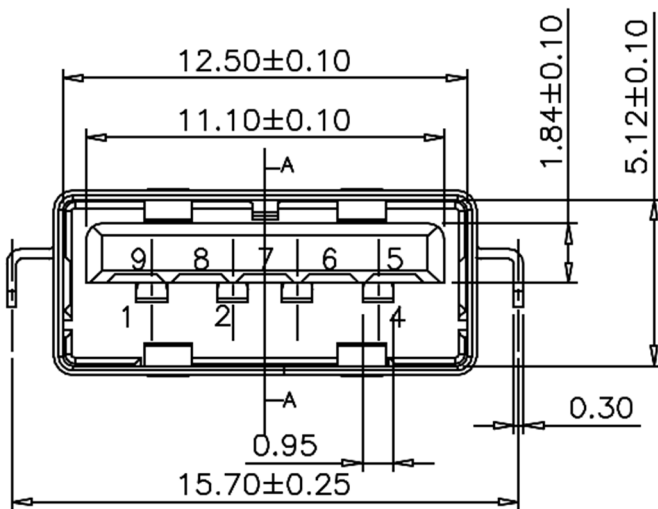
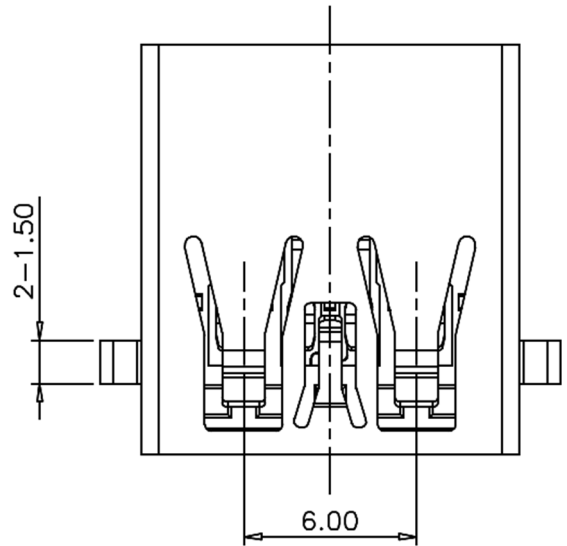
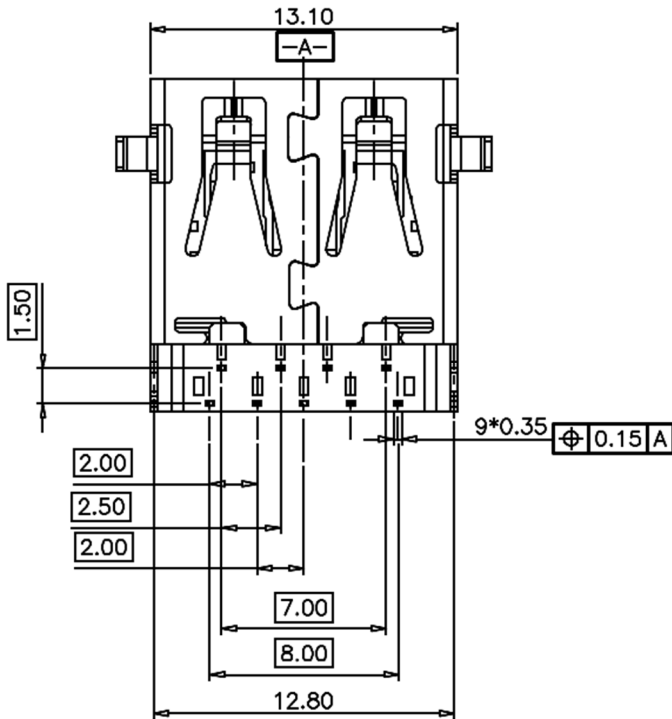
Tin Plated Solder Tails and Nickel Plated Shell. Tray Packaging.

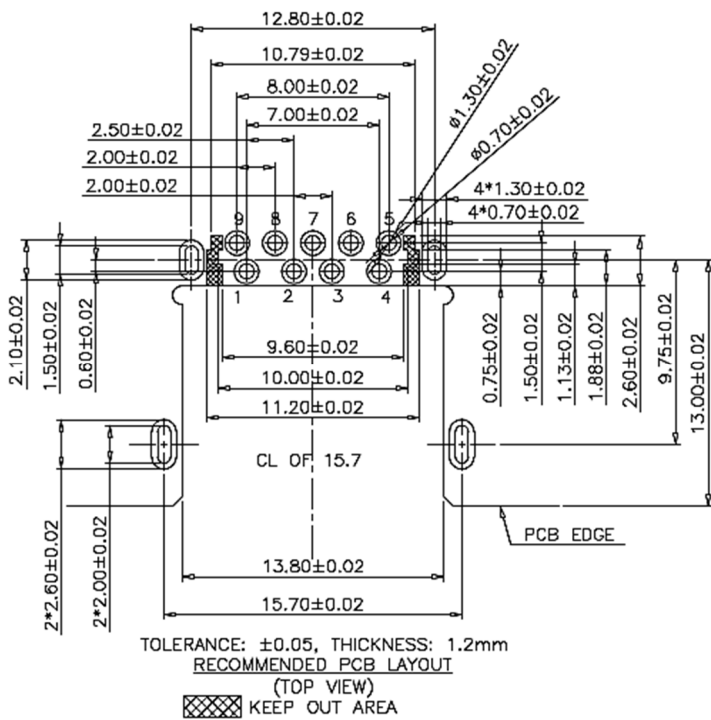
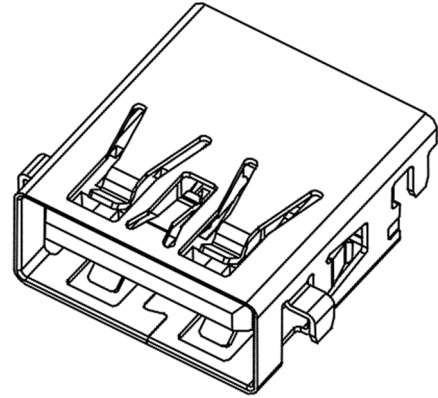
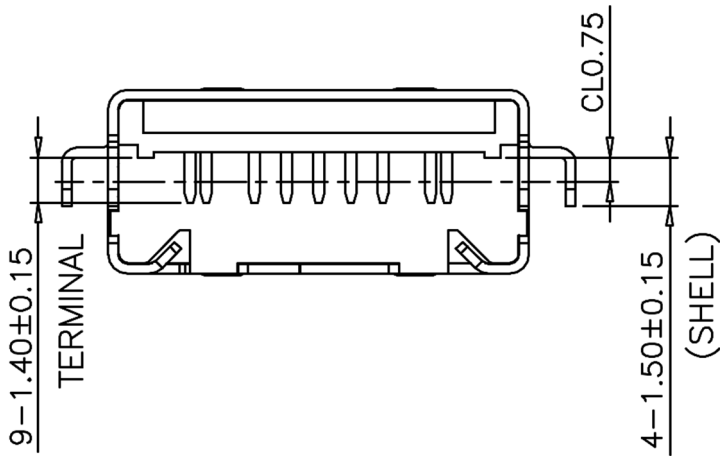
Please enquire on possible options for Shell Material, Contact Plating, Insulator Material and Product Packaging.

> TECHNICAL SPECIFICATION

NUMBER OF PORTS:	SINGLE	
CONNECTOR TYPE:	USB 3.0 TYPE A RECEPTACLE	
MOUNTING TYPE:	PCB THROUGH-HOLE MID-MOUNT REVERSE TYPE	
ORIENTATION:	HORIZONTAL 90°	
INSULATION (PLASTICS):	BLUE LCP UL94V-0 STD	(SEE > OPTIONS)
CONTACT MATERIAL:	PHOSPHOR BRONZE	
CONTACT PLATING:	GOLD FLASH	(SEE > OPTIONS)
SHELL MATERIAL:	STEEL AS STANDARD	(SEE > OPTIONS)
SHELL PLATING:	NICKEL	
SOLDER TAILS:	TIN	
RoHS COMPLIANT:	YES	
CURRENT RATING:	1.8A	
VOLTAGE RATING:	30V DC	
CONTACT RESISTANCE:	30 mΩ MAX	
DIELECTRIC WITHSTANDING VOLTAGE:	500V RMS	
INSULATION RESISTANCE:	1000MΩ	
OPERATING TEMPERATURE:	-40°C to +85°C	
MATING FORCE (MAX):	3.5 Kgf	
UNMATING FORCE (MIN):	1.02 Kgf	
DURABILITY:	5000 MATING CYCLES	
MAX PROCESSING TEMP:	LCP = 280°C for 30-60 SECS	

> PHYSICAL





Pin #	Signal Name	Description
1	VBUS	Power
2	D-	USB Differential Pair
3	D+	USB Differential Pair
4	GND	Ground for Power Return
5	StdA_SSRX-	SuperSpeed Receiver
6	StdA_SSRX-	Differential Pair
7	GND_DRAIN	Ground for Signal Return
8	StdA_SSTX-	SuperSpeed Transmitter
9	StdA_SSTX+	Differential Pair

> OPTIONS

SHELL MATERIAL:
(STEEL AS STANDARD NO SUFFIX)

CONTACT PLATING:
(GOLD FLASH OVER NICKEL STANDARD NO SUFFIX)

INSULATOR MATLS:
(BLUE LCP AS STANDARD NO SUFFIX)

PACKAGING:
(TRAY PACKAGING AS STANDARD NO SUFFIX)

PLEASE ENQUIRE FOR OTHER OPTIONS

PART NO. EXAMPLE: 605-0008 = STEEL SHELL, GOLD FLASH PLATING, LCP BLUE UL94V-0 HI-TEMP INSULATOR. TRAY PACKAGING. PLEASE VERIFY AVAILABILITY PRIOR TO SELECTION.



> REVISION HISTORY

Revision	Description	Date
1.0	Initial Drawing Release	09.11.2022

Revision History provided is for informational purposes only and is believed to be accurate.