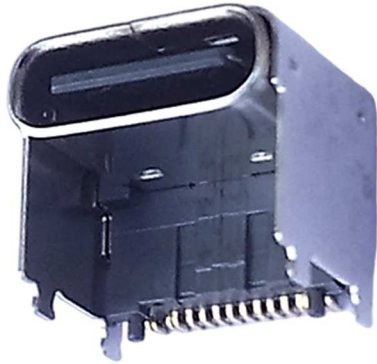


MPSI CONNEX USB Type C Connectors, 607 Series:

Part Code 607-0014 – Elevated Type C USB 2.0 Recept, 16P, Top Mount 90°, SMT, 5A, UL94V-0



Actual Connector Photo

Elevated USB Type C Connector, Center Height = 5.9mm
16 Pin with USB 2.0 Data Speeds / Mode of Operation.

Top Mount, SMT, 90° Horizontal Style PCB Mount
Receptacle. 5A Rated. Hi-Temp Black Nylon Insulator.

Gold Flash (1 Micron) Plated Contacts (*See > Options*)

Nickel Plated Stainless Steel Shell.

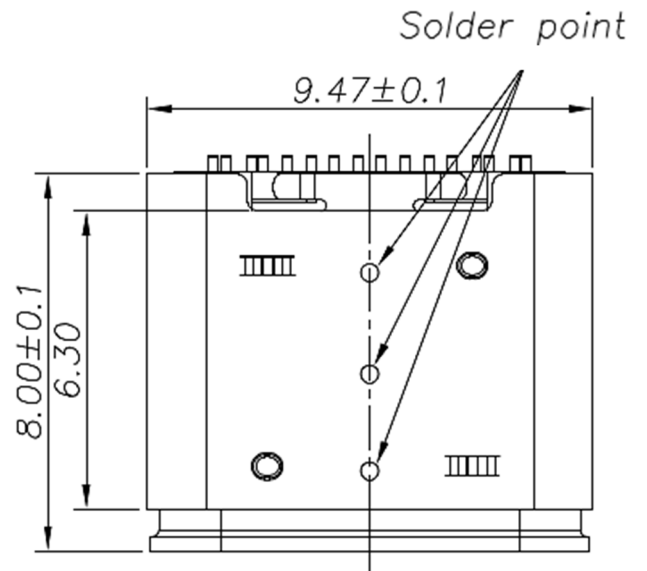
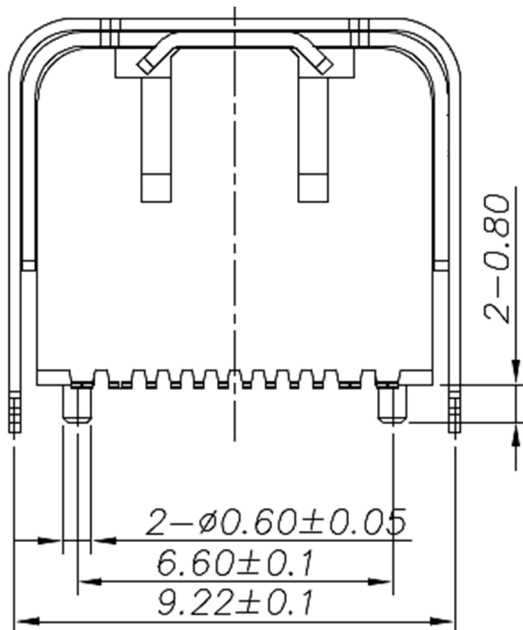
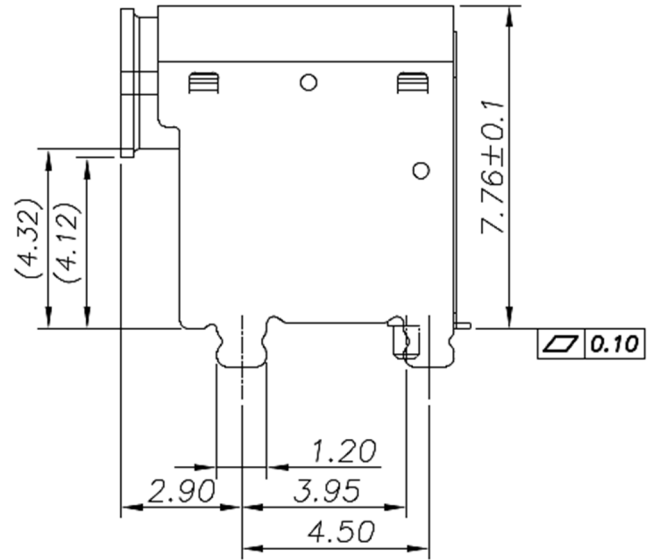
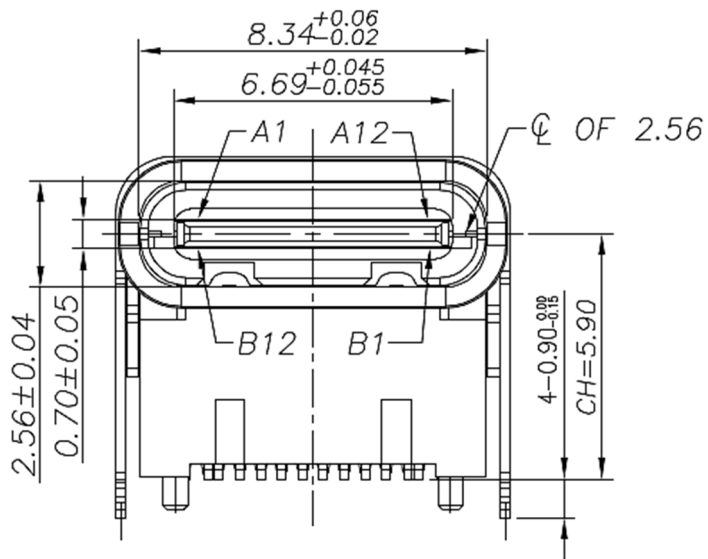
Equivalent to Molex 217180-0001.

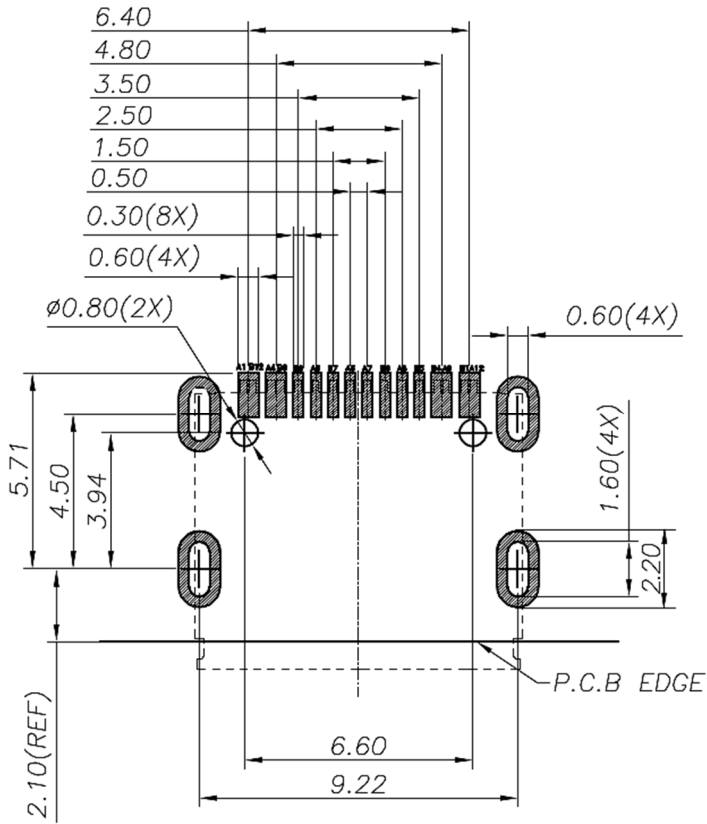
Supplied in Tape & Reel as Standard.

> TECHNICAL SPECIFICATION

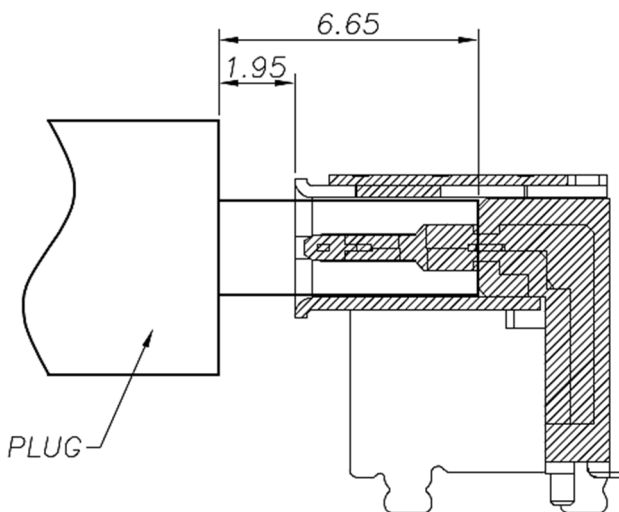
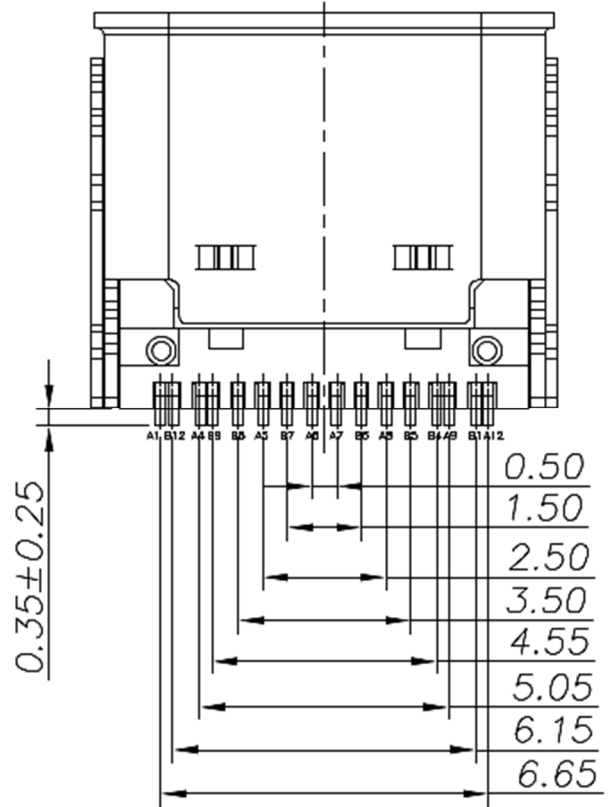
NUMBER OF PORTS:	SINGLE
CONNECTOR TYPE:	ELEVATED USB 2.0 TYPE C RECEPTACLE
MOUNTING TYPE:	PCB SMT
ORIENTATION:	HORIZONTAL 90°
INSULATION (PLASTICS):	BLACK HI TEMP NYLON
CONTACT MATERIAL:	COPPER ALLOY
CONTACT PLATING:	STD 1 MICRON (u") GOLD OVER NICKEL (<i>See > Options</i>)
SHELL MATERIAL:	STAINLESS STEEL
SHELL PLATING:	NICKEL 30u"
RoHS COMPLIANT:	EU RoHS 2011/65/EU and EU 2015/863
CURRENT RATING:	5A
VOLTAGE RATING:	20V DC
CONTACT RESISTANCE:	40 mΩ MAX
DIELECTRIC WITHSTANDING VOLTAGE:	100V AC FOR 1 MIN
INSULATION RESISTANCE:	100 MΩ MIN
OPERATING TEMPERATURE:	-30°C to +80°C
MATING FORCE (MAX):	0.5 - 2.0kgf
UNMATING FORCE (MIN):	0.8 - 2.0kgf
DURABILITY:	10000 MATING CYCLES
MAX PROCESSING TEMP:	230°C for 30-60 SECONDS (260°C 10 SECONDS)

> PHYSICAL





RECOMMEND P.C.B LAYOUT (COMPONENT SIDE)
TOLERANCE FOR PCB LAYOUT IS ± 0.05



AFTER MATING
SCALE 1:1

USB TYPE-C PIN ASSIGNMENTS

PIN NUMBER	SIGNAL NAME
A1	GND
A4	VBUS
A5	CC1
A6	Dp1
A7	Dn1
A8	SBU1
A9	VBUS
A12	GND

PIN NUMBER	SIGNAL NAME
B12	GND
B9	VBUS
B8	SBU2
B7	Dn2
B6	Dp2
B5	CC2
B4	VBUS
B1	GND



> PART OPTIONS:

CONTACT PLATING:

(GOLD FLASH PLATING 1 MICRON (u") AS STANDARD, NO SUFFIX)

PART NUMBER 607-0014-30 = 30 MICRON (u") GOLD

PART NUMBER EXAMPLE: 607-0014 = HI-TEMP NYLON INSULATOR, GOLD FLASH PLATING. PLEASE VERIFY AVAILABILITY ON OPTIONS PRIOR TO SELECTION / ORDERING

> REVISION HISTORY

Revision	Description	Date
1.0	Initial Drawing Release	08.11.2021
2.0	Factory Design Revision	08.06.2023
3.0	Update PCB Layout Information	14.06.2023

Revision History provided is for informational purposes only and is believed to be accurate.

