

MPSI CONNEX USB 3.0 Superspeed Connectors, 605 Series:

Part 605-0010 – Type B Recept, Horizontal 90°, TH Mount, 1.8A, UL94V-0 Blue LCP Insulator



Images are for Illustrative Purposes Only

USB 3.0 Type B, 90° Through-Hole PCB Mount Connector.

Current Rating 1.8A. Blue UL94V-0 LCP Hi-Temp Insulator.

Copper Alloy Shell and Gold Flash Plated Contacts as Standard. Tin Plated Solder Tails and Nickel Plated Shell. Tray Packaging.

Available Options (*SEE > OPTIONS*):

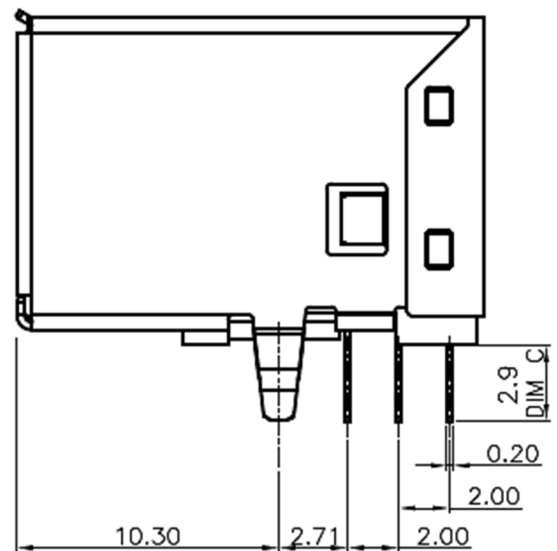
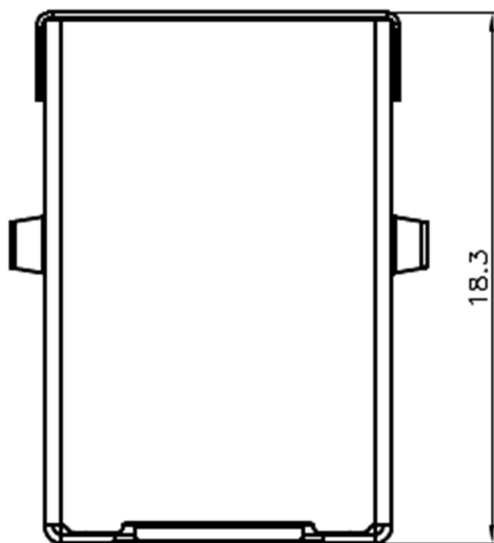
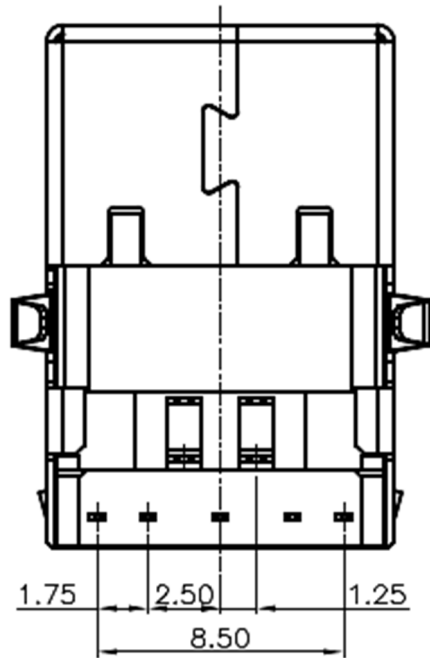
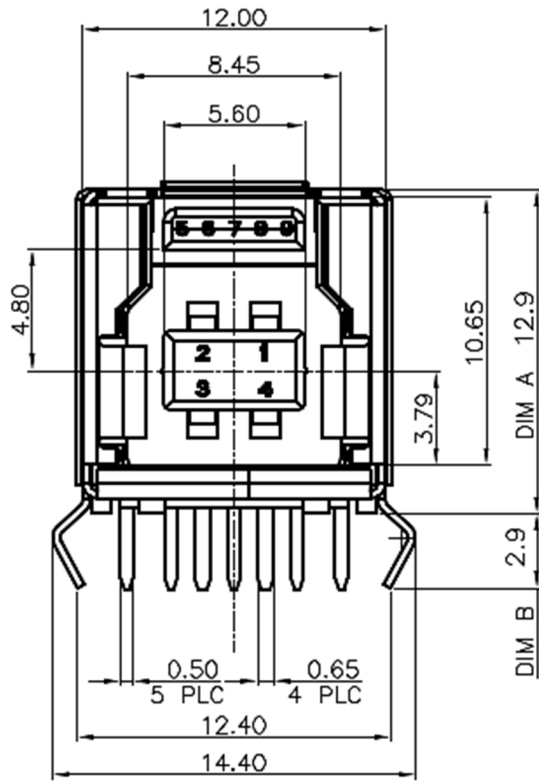
Contact Plating
Insulator Colour

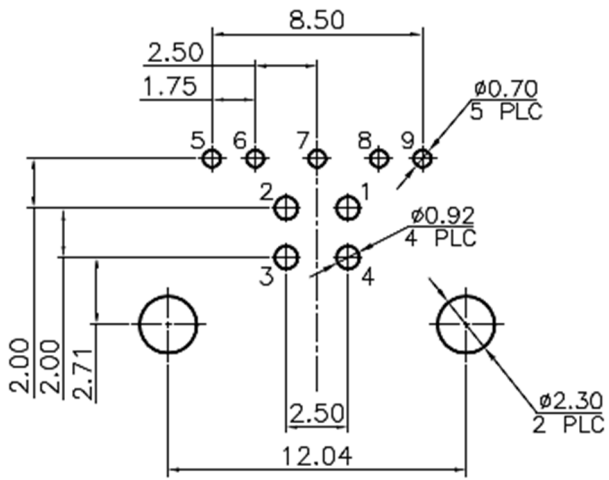
Equivalent to Wurth 692221030100

> TECHNICAL SPECIFICATION

NUMBER OF PORTS:	SINGLE
CONNECTOR TYPE:	USB 3.0 TYPE B RECEPTACLE
MOUNTING TYPE:	PCB THROUGH-HOLE
ORIENTATION:	HORIZONTAL 90°
INSULATION (PLASTICS):	BLUE LCP UL94V-0
CONTACT MATERIAL:	COPPER ALLOY
CONTACT PLATING:	1U" GOLD, 50U" NICKEL U/PLATING (<i>SEE > OPTIONS</i>)
SHELL MATERIAL:	COPPER ALLOY
SHELL PLATING:	50U" NICKEL UNDERPLATING
BACK SHELL MATERIAL:	STEEL, WITHOUT PLATING.
SOLDER TAILS:	TIN
RoHS COMPLIANT:	EU RoHS 2011/65/EU and EU 2015/863
CURRENT RATING:	1.8A PWR PINS 1 & 4. 0.25A SIGNAL PINS 2,3,5,6,7,8 & 9
VOLTAGE RATING:	30V DC
CONTACT RESISTANCE:	30 mΩ MAX
DIELECTRIC WITHSTANDING VOLTAGE:	100V AC
INSULATION RESISTANCE:	100MΩ
OPERATING TEMPERATURE:	-25°C to +75°C
MATING FORCE (MAX):	35.0 NEWTON
UNMATING FORCE (MIN):	10.0 NEWTON
DURABILITY:	1500 MATING CYCLES
MAX PROCESSING TEMP:	280°C 30-60 SECS

> PHYSICAL





RECOMMEND P.C.B LAYOUT COMPONENT SIDE
 DEFAUET TOLERANCES: ± 0.05 (PCB T=1.6mm)

Pin NUMBER	SIGNAL NAME
1	VBUS
2	D-
3	D+
4	GND
5	StdB_SSTX-
6	StdB_SSTX+
7	GND_DRAIN
8	StdB_SSRX-
9	StdB_SSRX+
Shell	Shield



> PART OPTIONS:

CONTACT PLATING: (GOLD FLASH OVER NICKEL STD, NO SUFFIX)	-G5 5U" GOLD
INSULATOR (BLUE LCP AS STANDARD, NO SUFFIX)	-B BLACK LCP INSULATOR
PART NO. EXAMPLE: 605-0010-G5-B = COPPER ALLOY SHELL, 5U" GOLD PLATING, BLACK LCP UL94V-0. TRAY PACKAGING. PLEASE VERIFY AVAILABILITY ON OPTIONS PRIOR TO SELECTION.	

> REVISION HISTORY

Revision	Description	Date
1.0	Initial Drawing Release	17.09.2012
2.0	New Factory Drawing Revision with Options Added	18.09.2020
3.0	Upgrade of Part to LCP Hi-Temp Version	22.11.2023

Revision History provided is for informational purposes only and is believed to be accurate.

Price



Quality



Service

